

DATE: 12-2-13

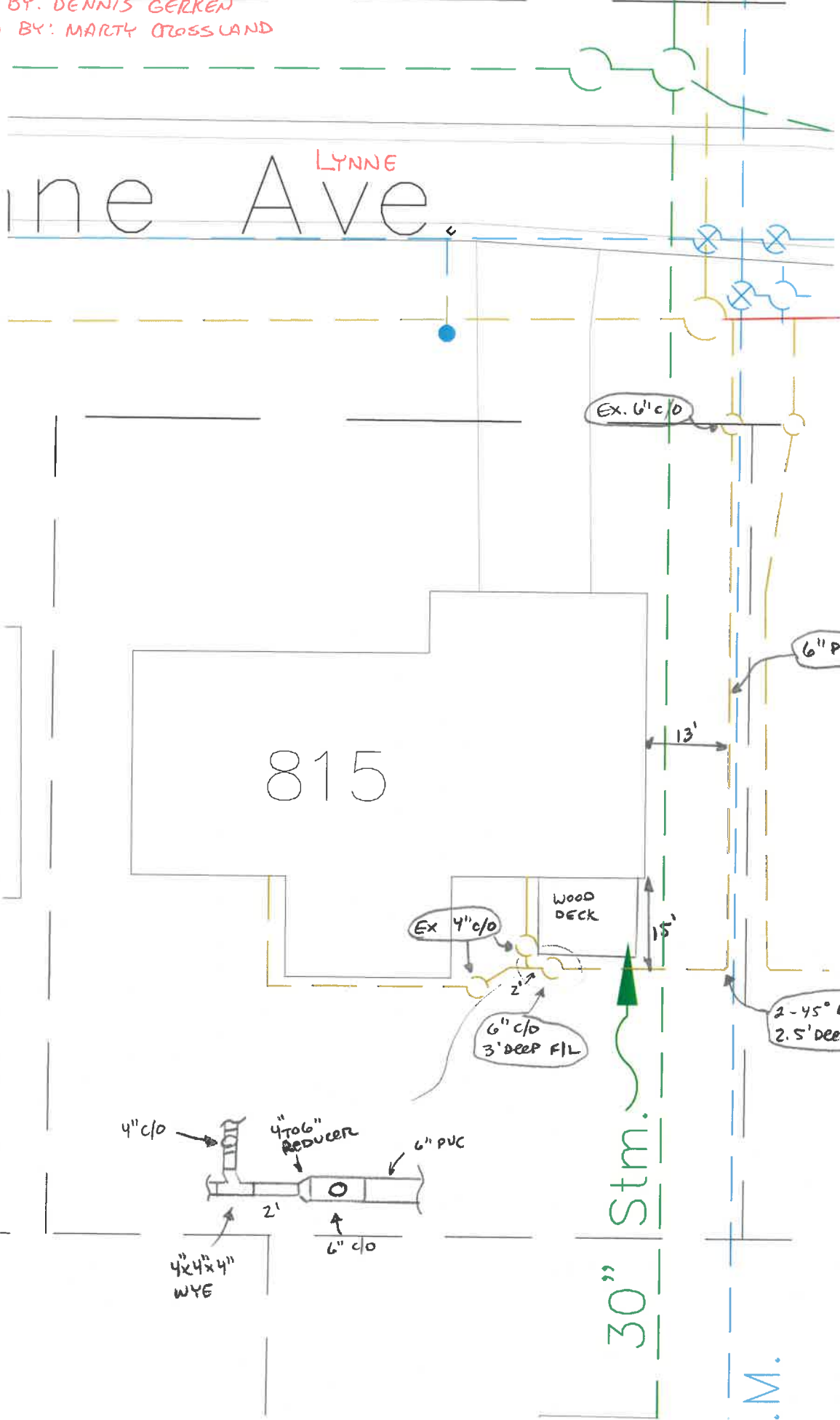
INSTALLED BY: DENNIS GERKEN

INSPECTED BY: MARTY GROSSLAND

815 LYNNE AVENUE

N
1" = 20'

LYNNE Ave



Ex. 6" c/o

6" PVC

815

13'

WOOD DECK

15'

Ex. 4" c/o

6" c/o
3' DEEP FIL

2-45° BENDS
2.5' DEEP FIL

4" c/o

4" to 6" REDUCER

6" PVC

4x4x4" WYE

2'

30" Stm.

M.